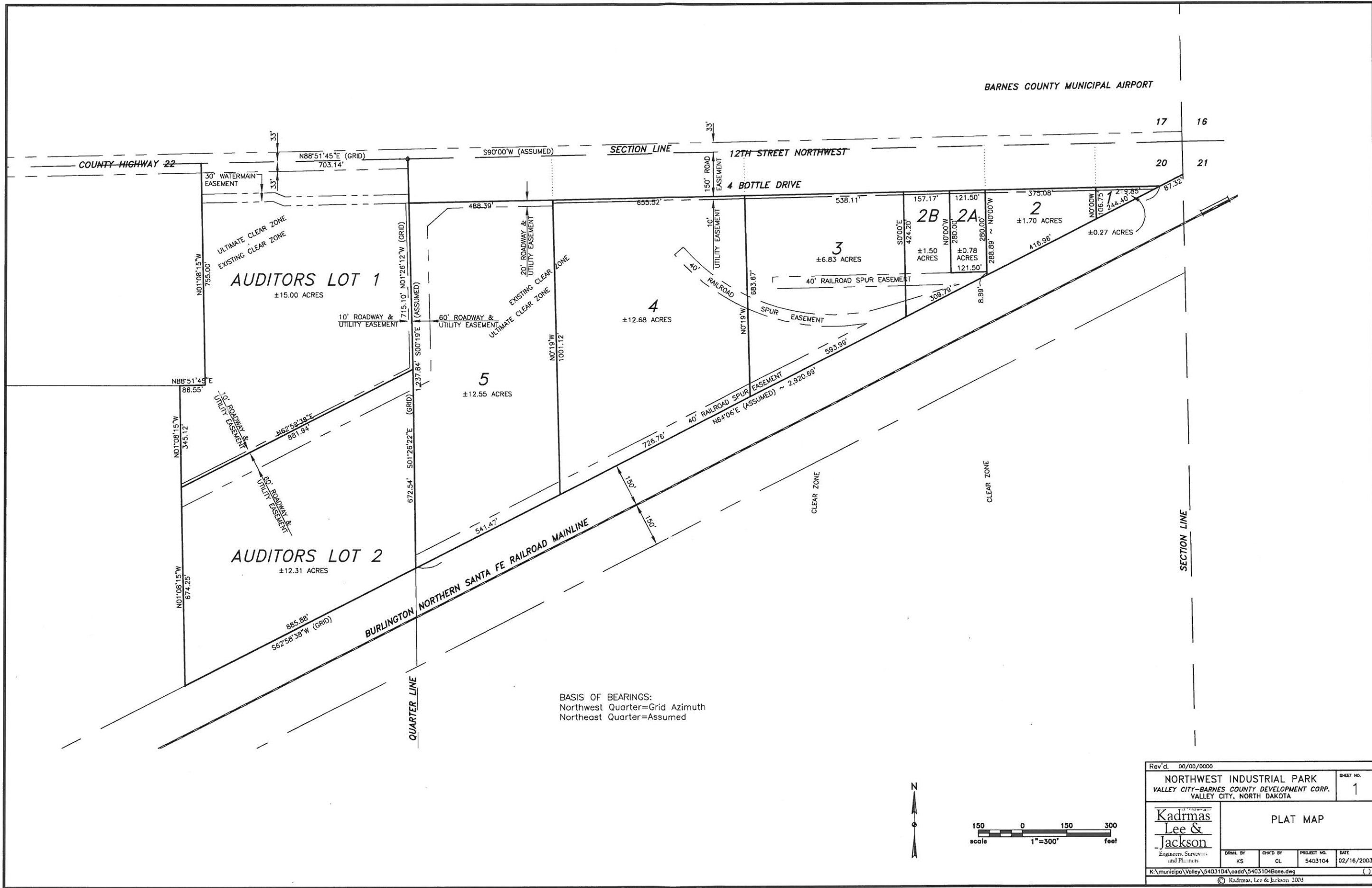
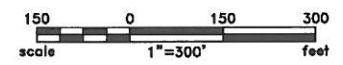


BARNES COUNTY MUNICIPAL AIRPORT



BASIS OF BEARINGS:  
 Northwest Quarter=Grid Azimuth  
 Northeast Quarter=Assumed



Rev'd. 00/00/0000		SHEET NO. 1	
NORTHWEST INDUSTRIAL PARK VALLEY CITY-BARNES COUNTY DEVELOPMENT CORP. VALLEY CITY, NORTH DAKOTA			
Kadmas Lee & Jackson Engineers, Surveyors and Planners		PLAT MAP	
DRWN. BY KS	CHK'D BY CL	PROJECT NO. 5403104	DATE 02/16/2003
K:\municipal\Valley\5403104\cadd\5403104Base.dwg			(7)
© Kadmas, Lee & Jackson 2003			